

## 一. Install QPST2.7

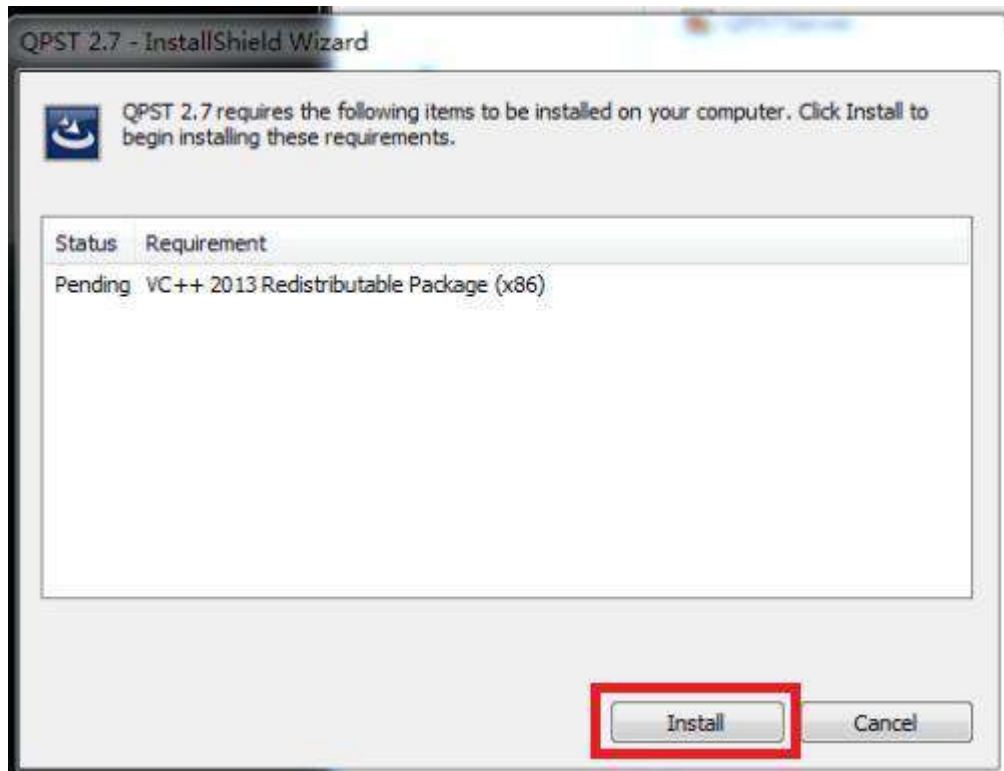
Document path:

<https://www.asuswebstorage.com/navigate/s/680137D3EF584B43B8D5AEC449CBOA0BY>  
or in [Tuserhp.com](http://Tuserhp.com)

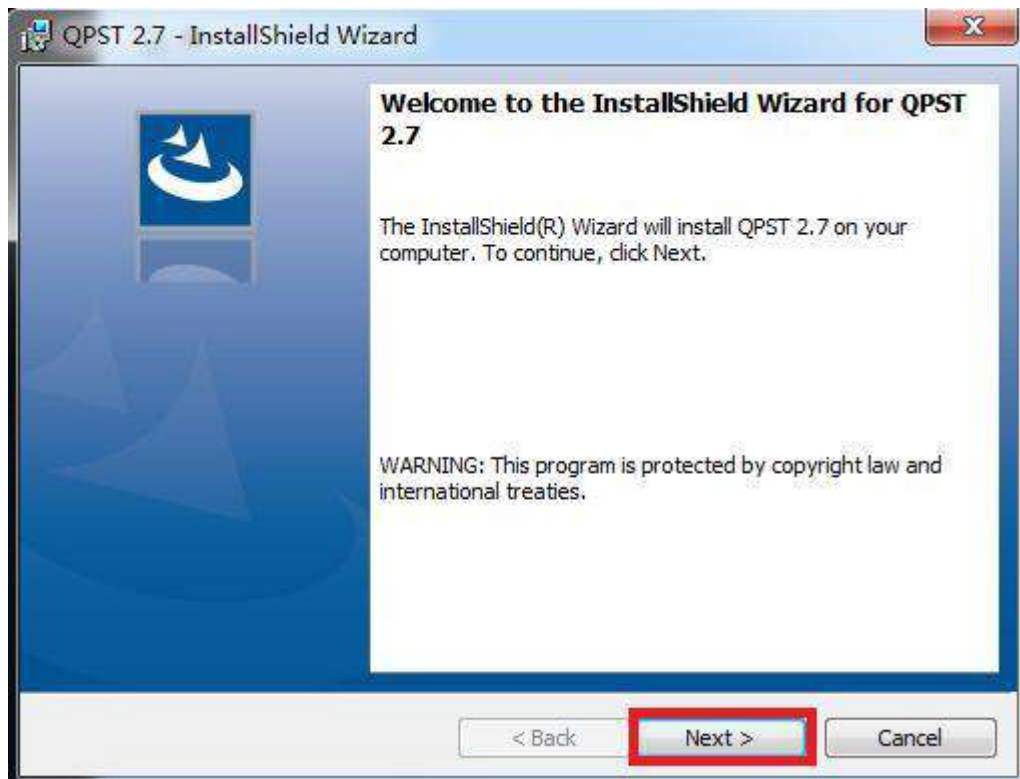
- 1 unzip qpst.win.2.7\_installer\_00471.4
- 2 Click QPST.2.7.471.exe



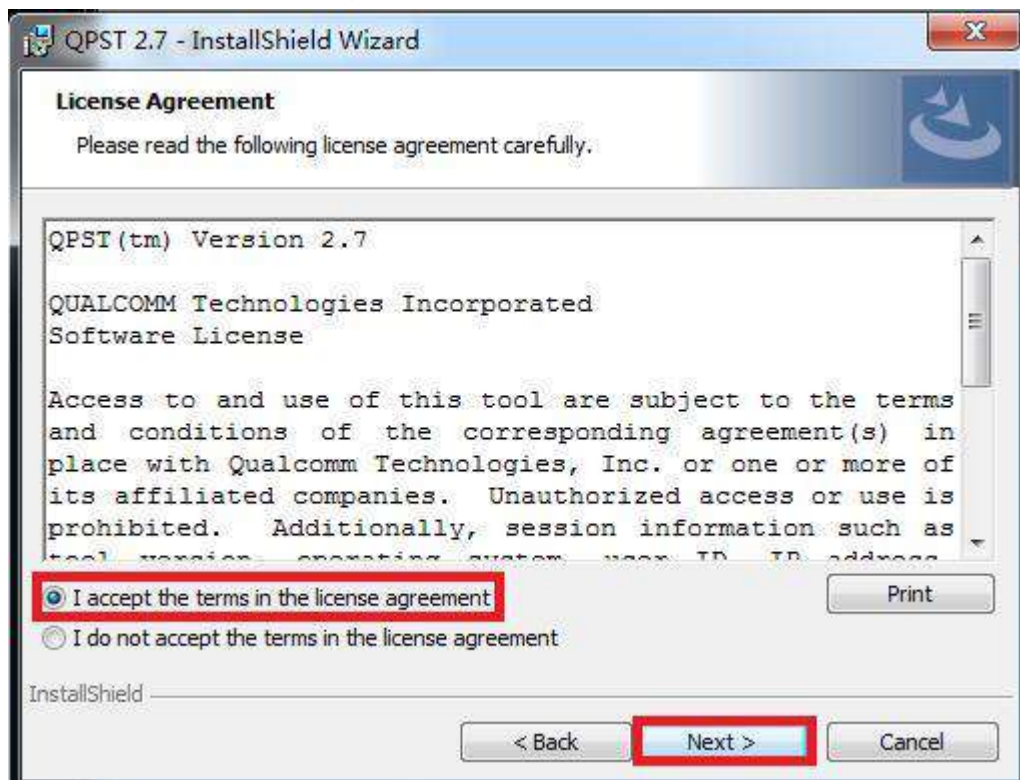
- 3 The program will remind need to install VC++2013, click install



4 Install qpst, click next



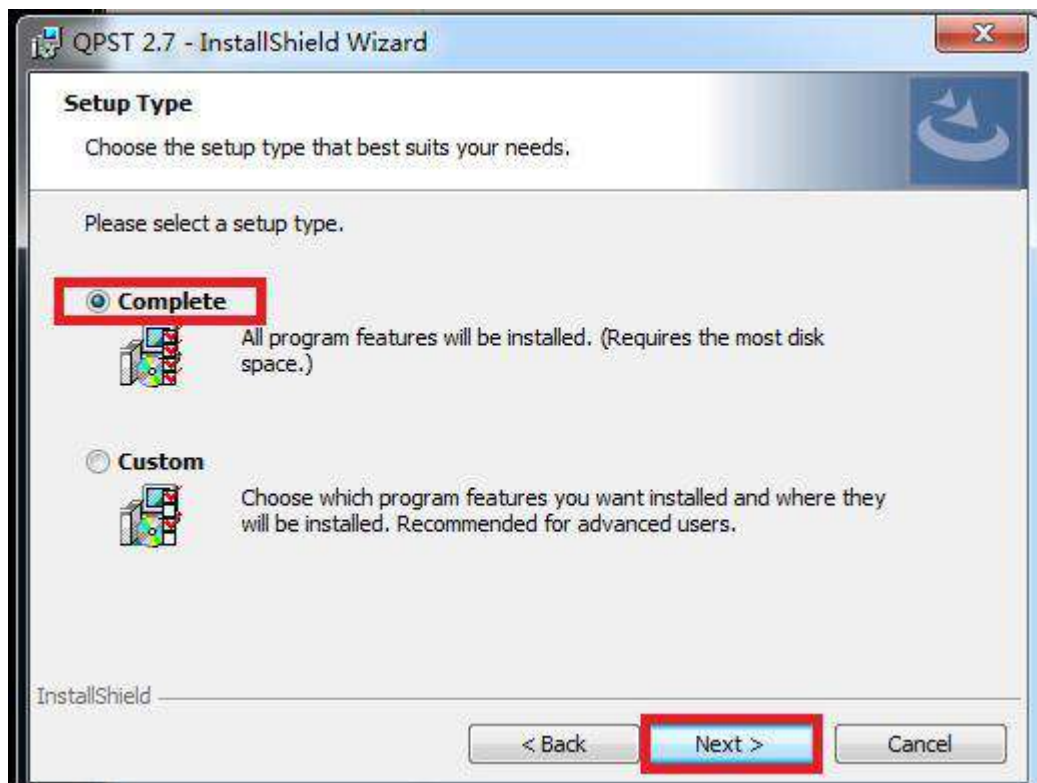
5 Select I accept the license agreement, , then click next



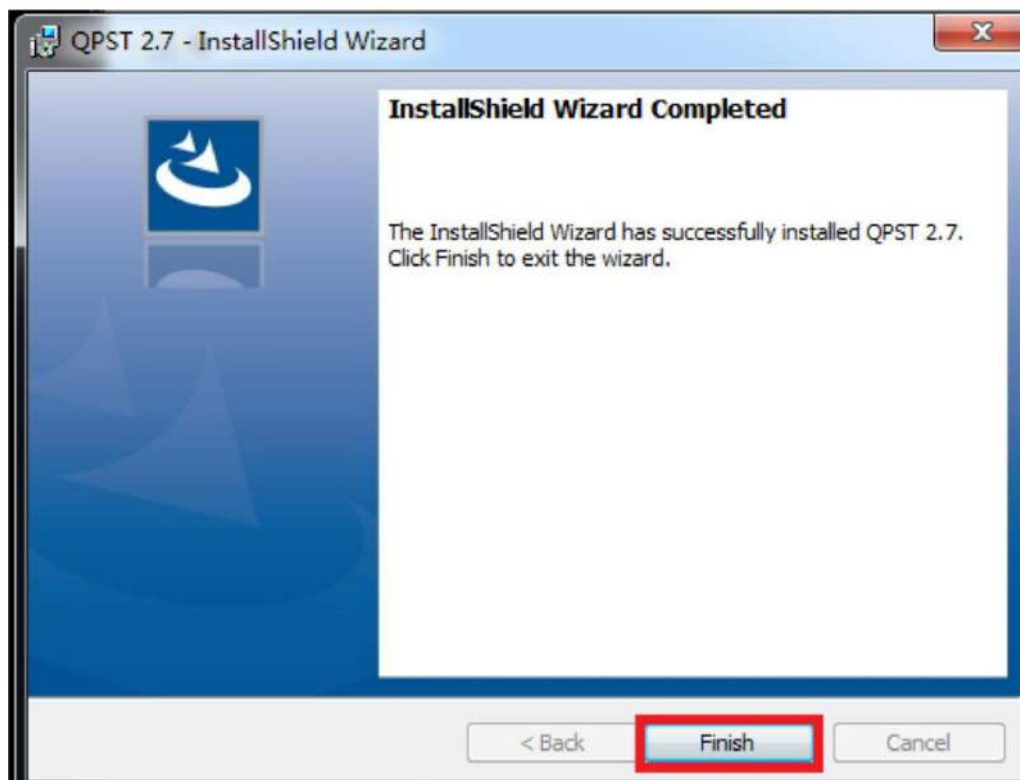
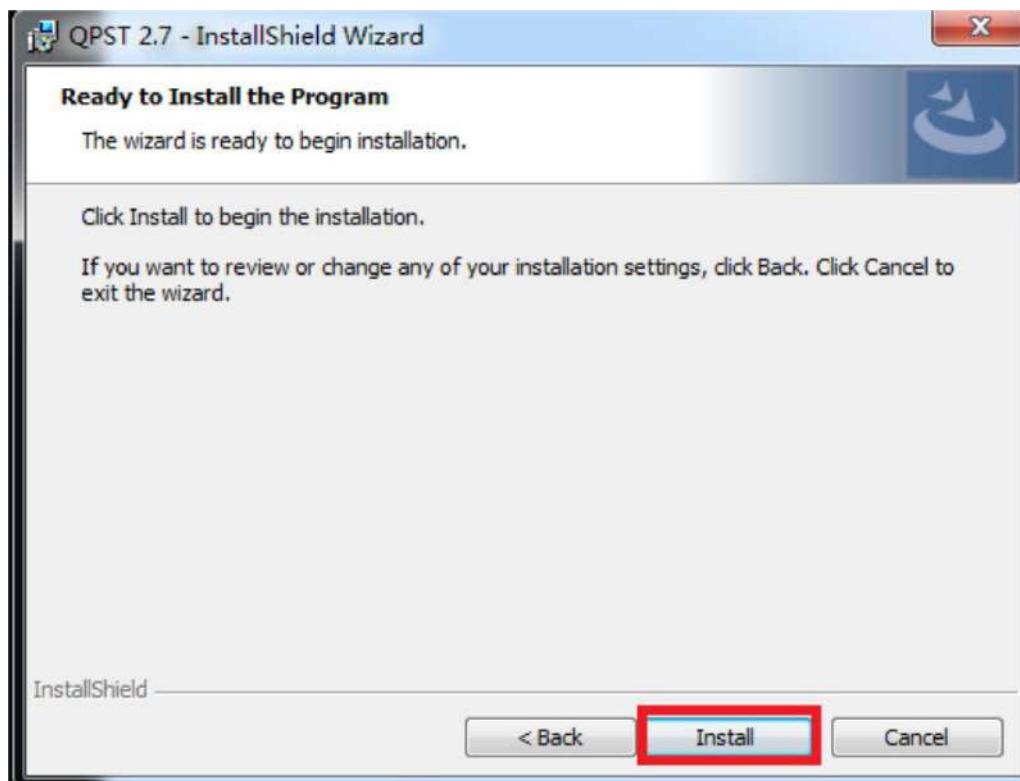
6 Do not modify the installation path, click next



7 Select complete, Click next



8 Click Install



## 二. Install QDART

Document path:

<https://www.asuswebstorage.com/navigate/s/680137D3EF584B43B8D5AEC449CBOA0BY>  
or in [Tuserhp.com](http://Tuserhp.com)

- 1 unzip qdart.win.4.8\_installer\_00053.111-20-17\_10\_57\_30
- 2 Click Setup.exe



setup.exe

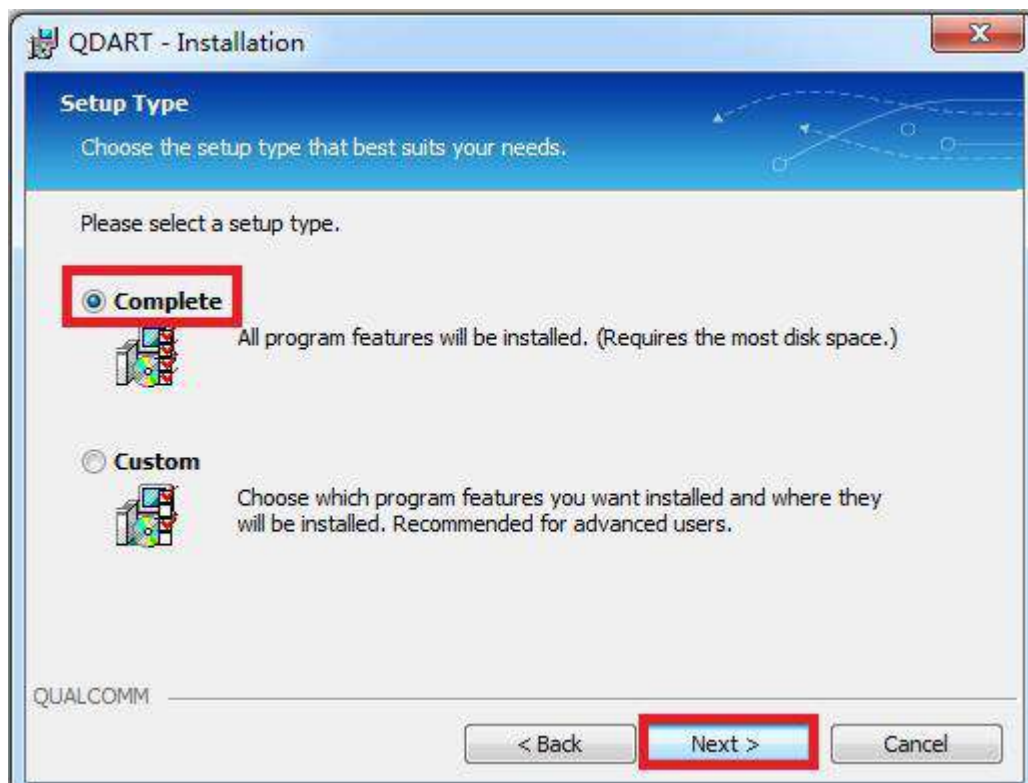
- 3 Click next



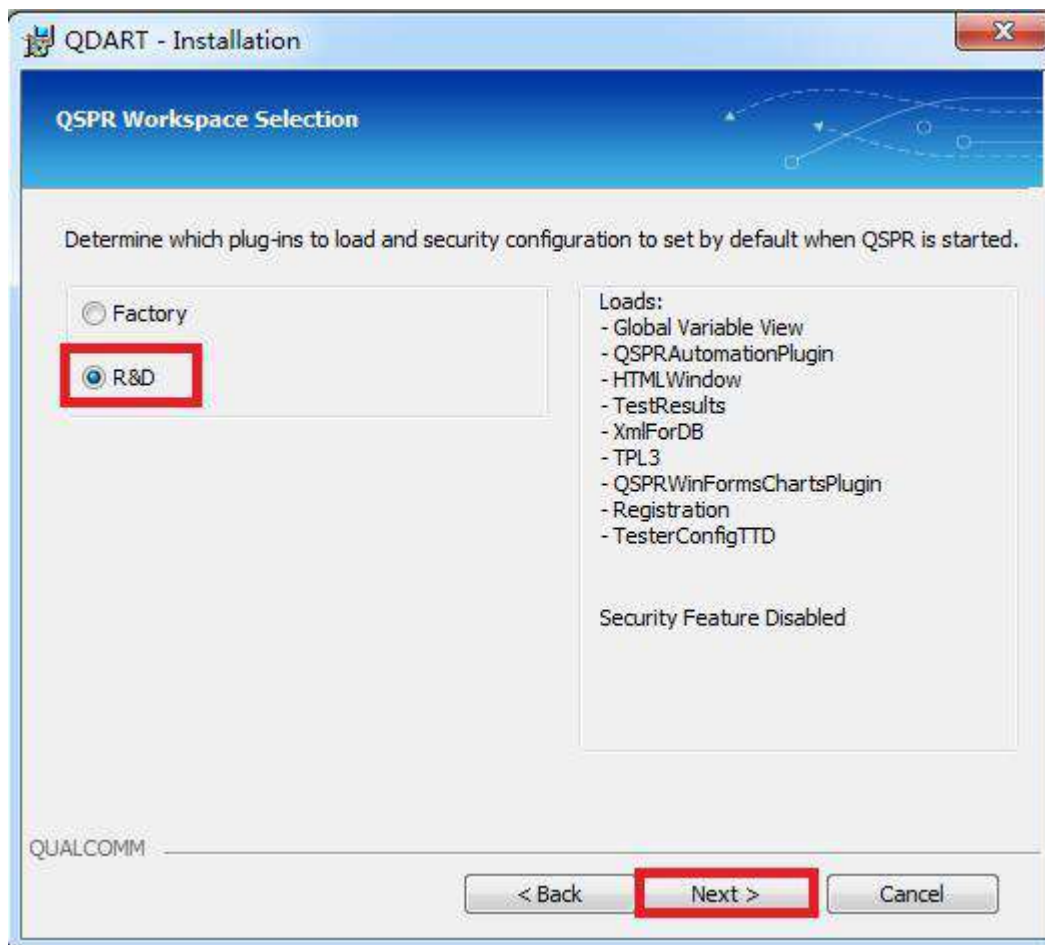
4 Tick the " I have read this notice", Click next



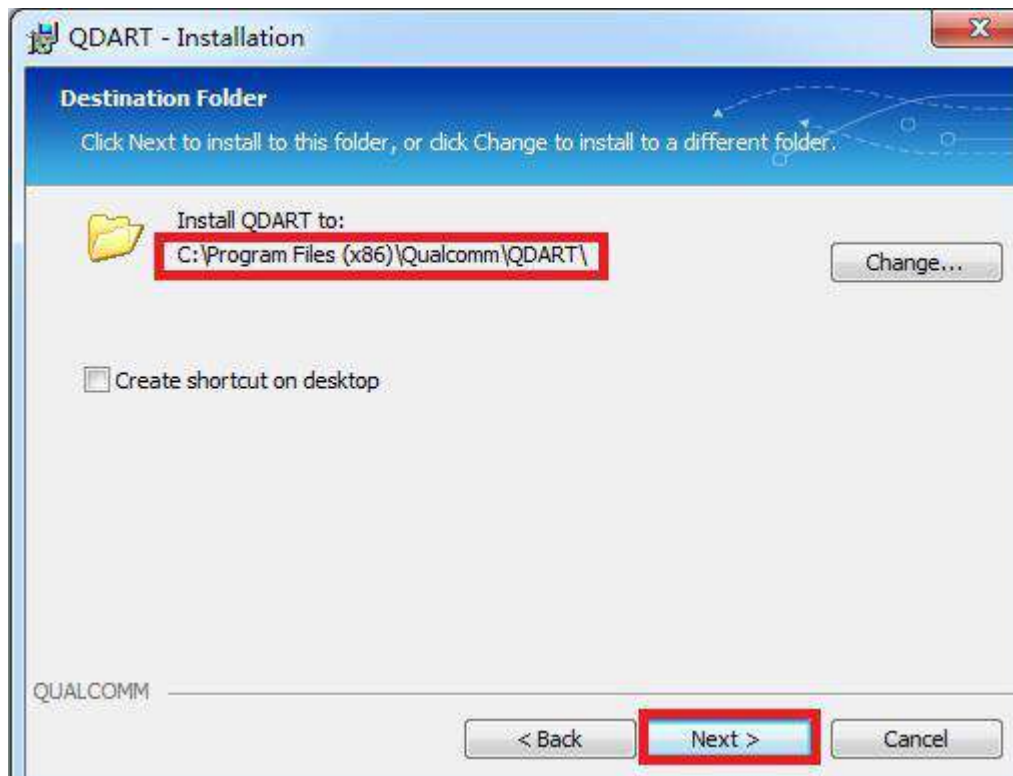
5 Select complete, then click next



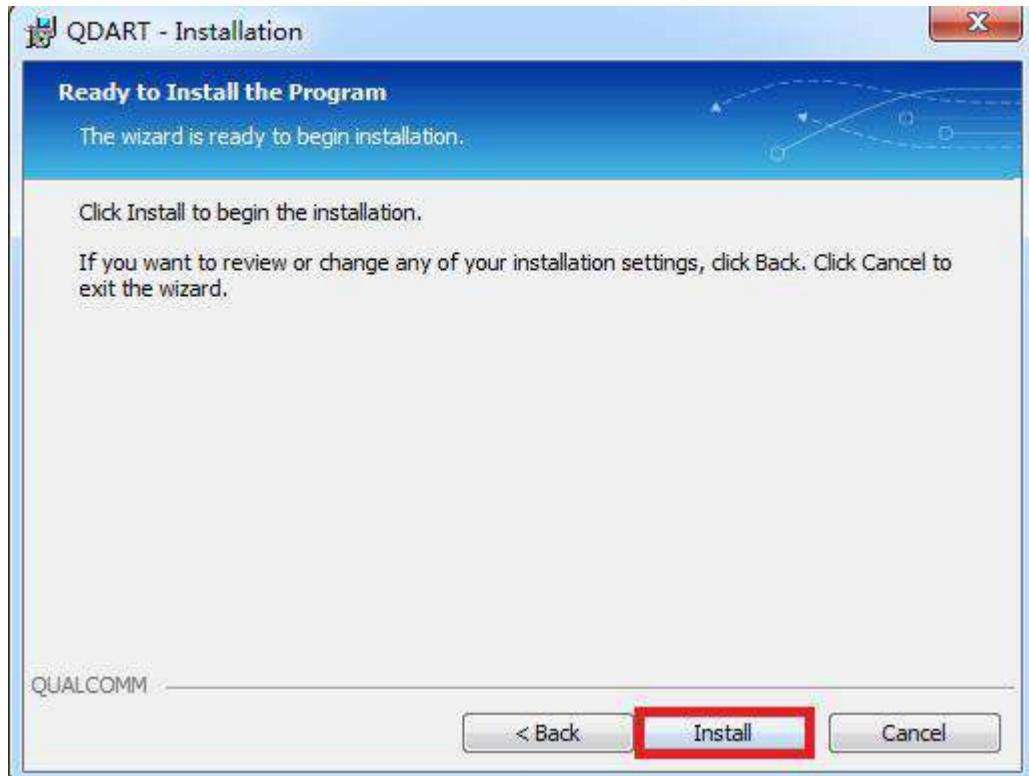
6 Select R&D, Click next



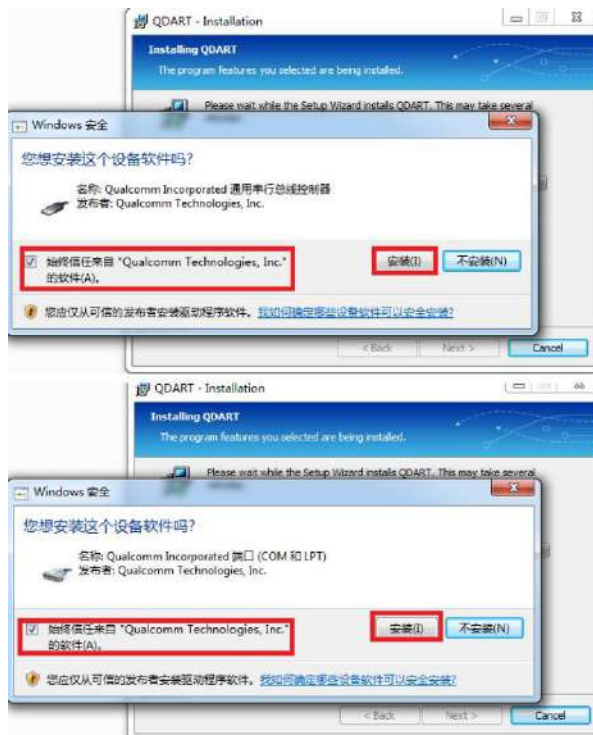
7 Do not modify the installation path, click next



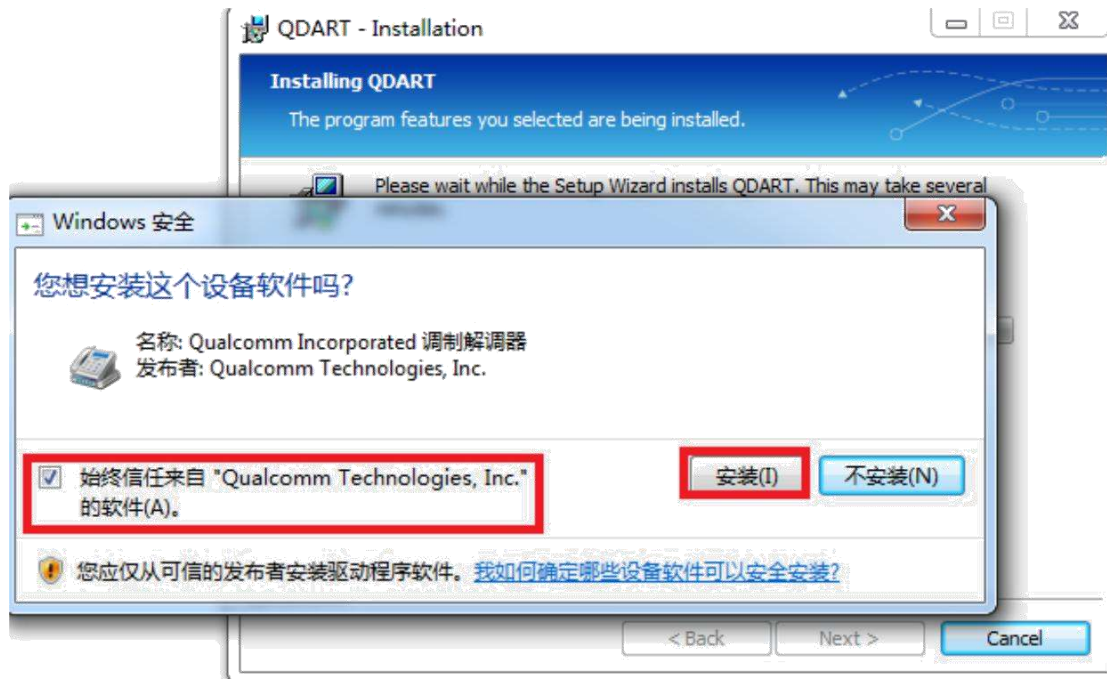
8 Click install

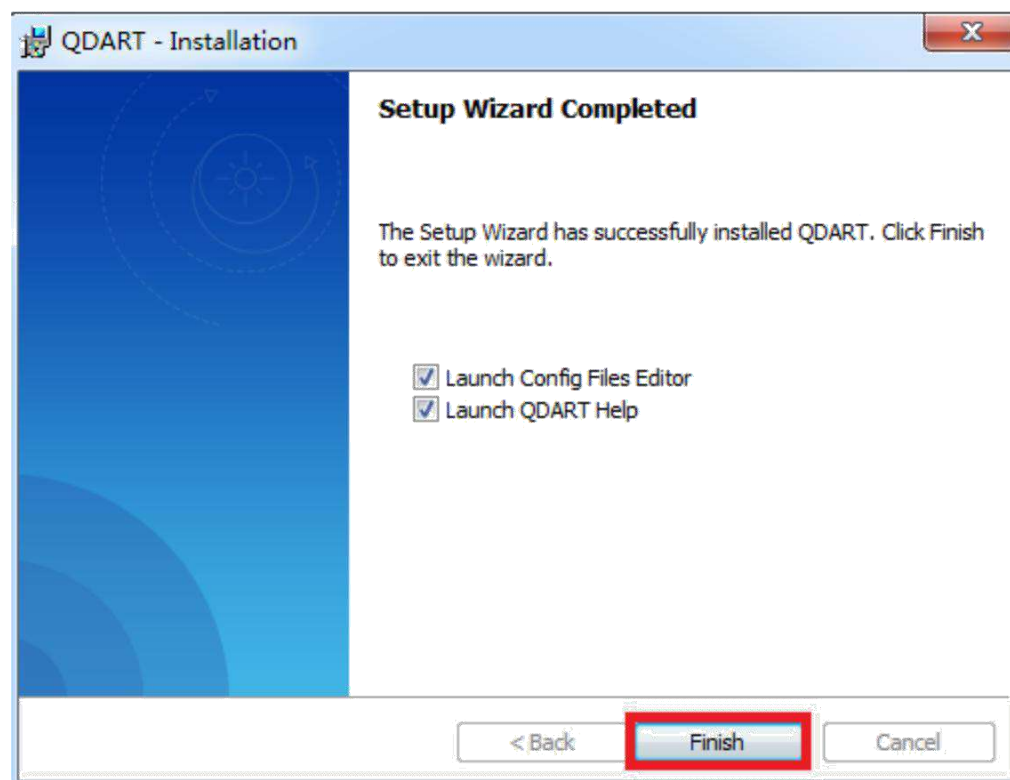
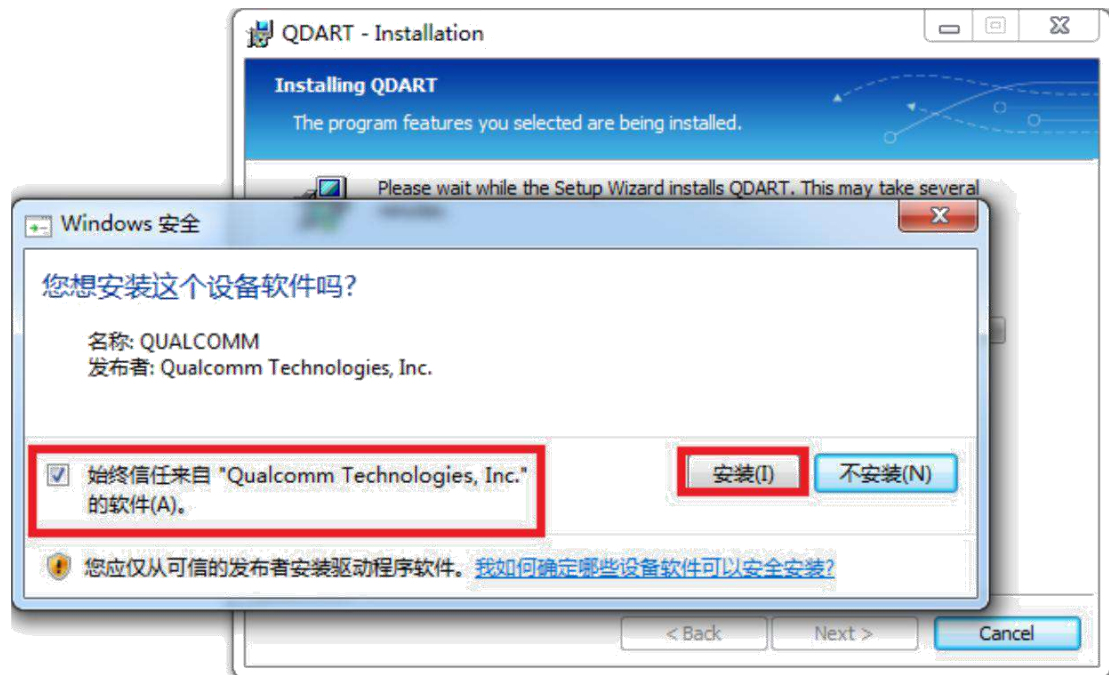


9 The installation process will pop up several interfaces that require driver installation. Select trust and install.



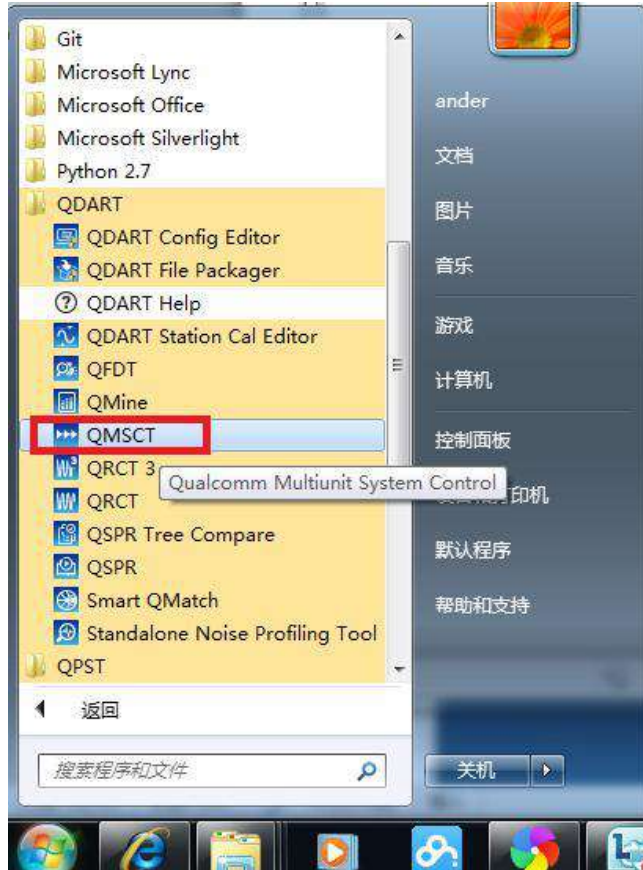




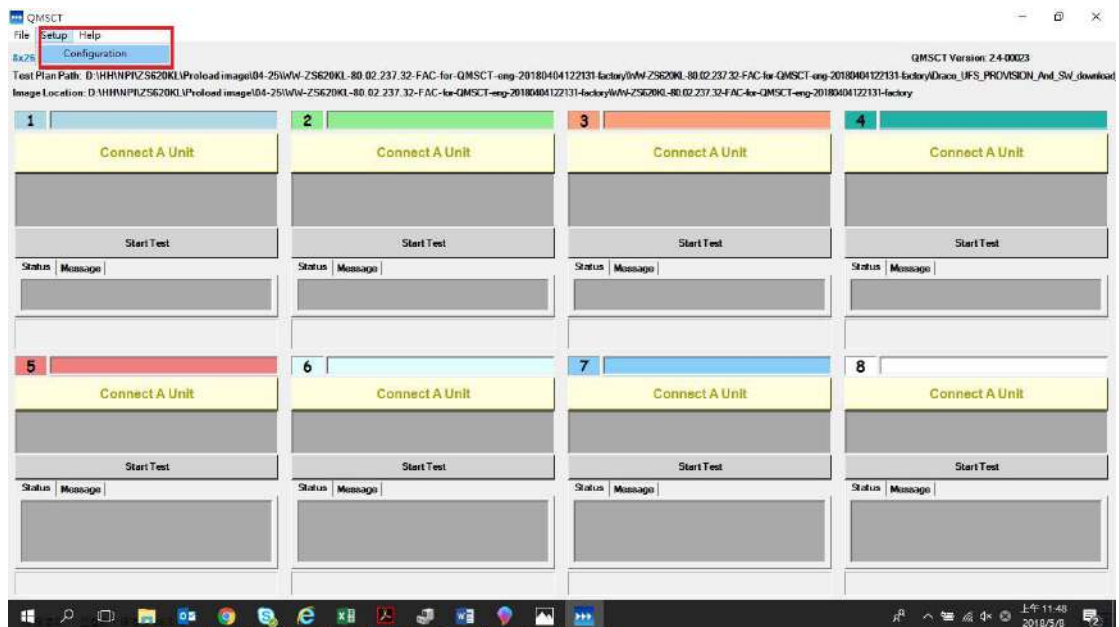


### 三. Use QMSCT for image download

1. Execute "Program files ->QDART->QMSCT"



2. Click setup->configuration

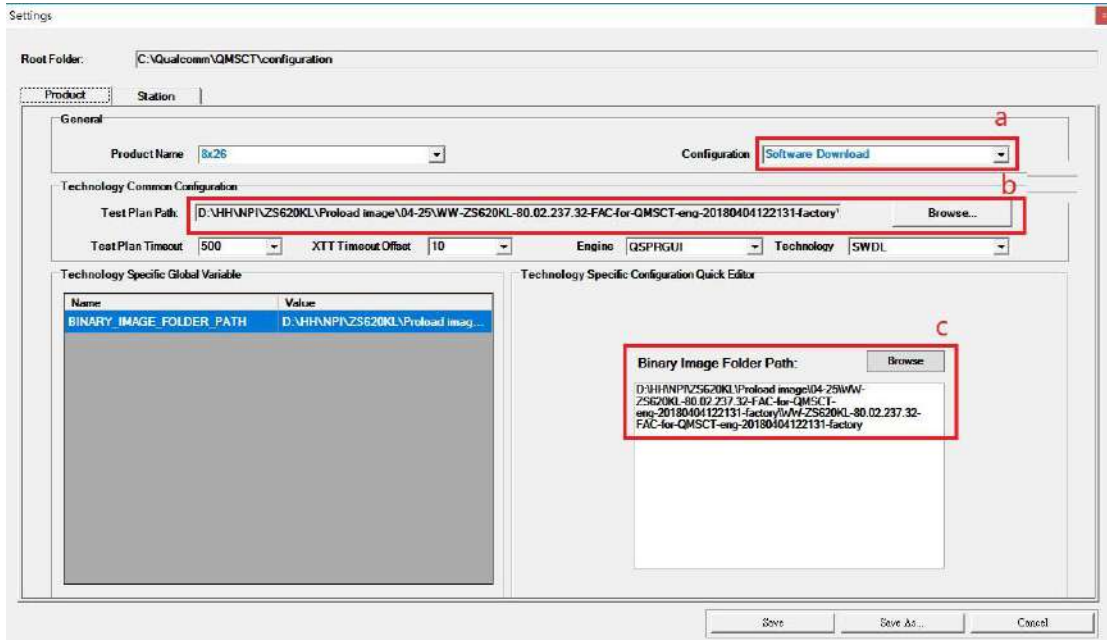


a. Select software download in Tuserhp.com

b. Select test plan path:

..\WW-ZS620KL-80.02.237.32-FAC-for-QMSCT-eng-20180404122131-factory\WW-ZS620KL-80.02.237.32-FAC-for-QMSCT-eng-20180404122131-factory\

Draco\_UFS\_PROVISION\_And\_SW\_download\_FHLOADER.txt



c. Image folder path,

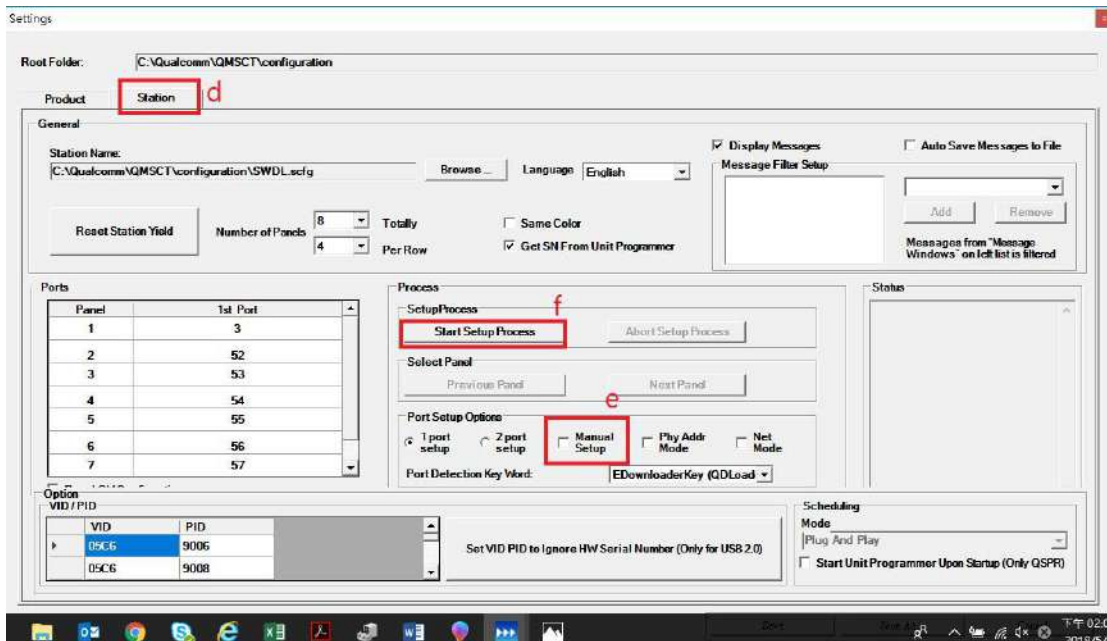
..\WW-ZS620KL-80.02.237.32-FAC-for-QMSCT-eng-20180404122131-factory\WW-ZS620KL-80.02.237.32-FAC-for-QMSCT-eng-20180404122131-factory\

d. Click "station" to set com port

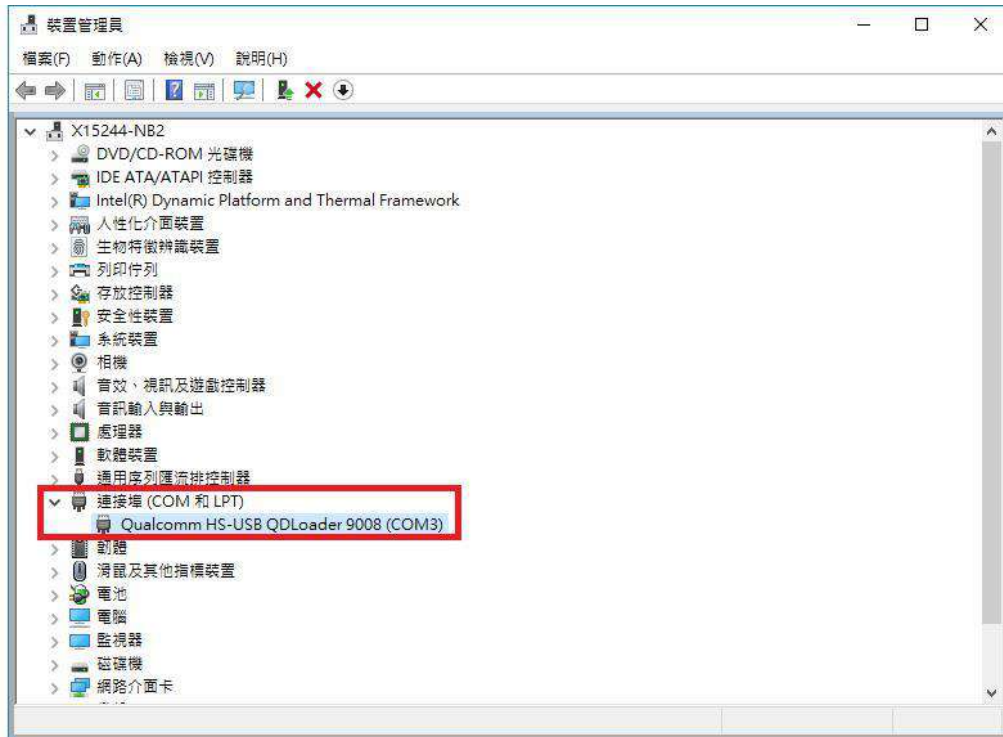
e. Disable manual setup

f. Click start setup process

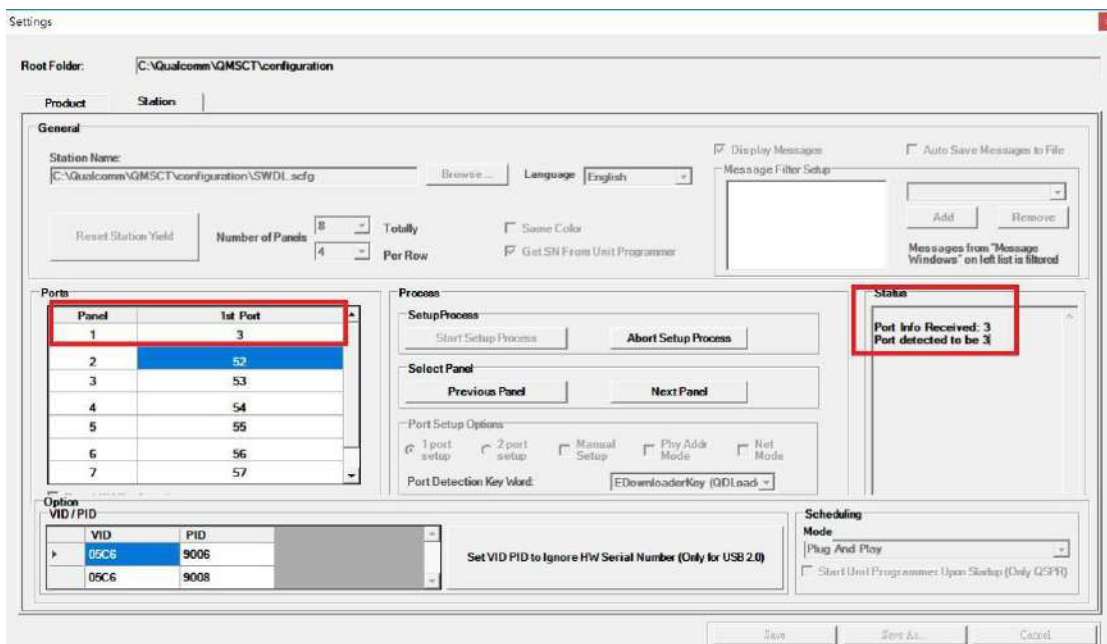
(Please disconnect any devices you may already have connected before starting the setup)



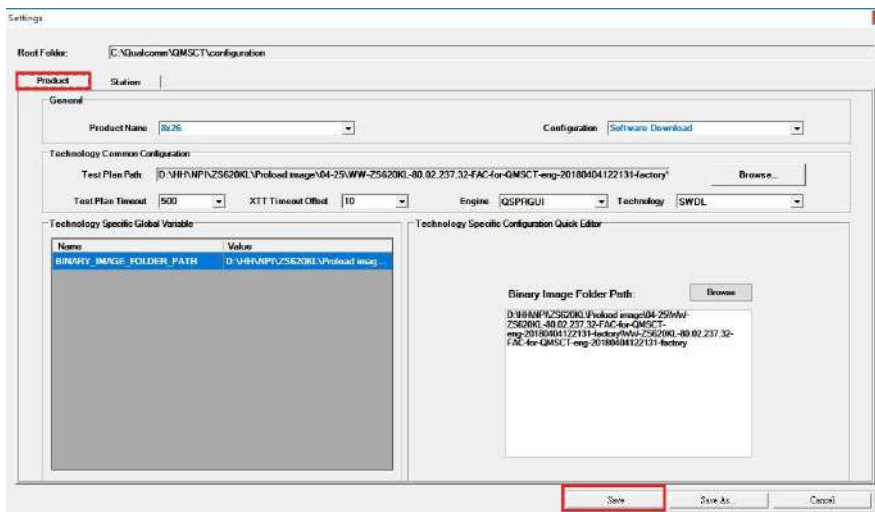
- Device press **Vol\_up + Vol\_down + Power key** into **EDL mode**,
- Please connect device with OA via USB cable, after see the device manager will appear **Qualcomm HS-USB QDLoader 9008 COM X**,



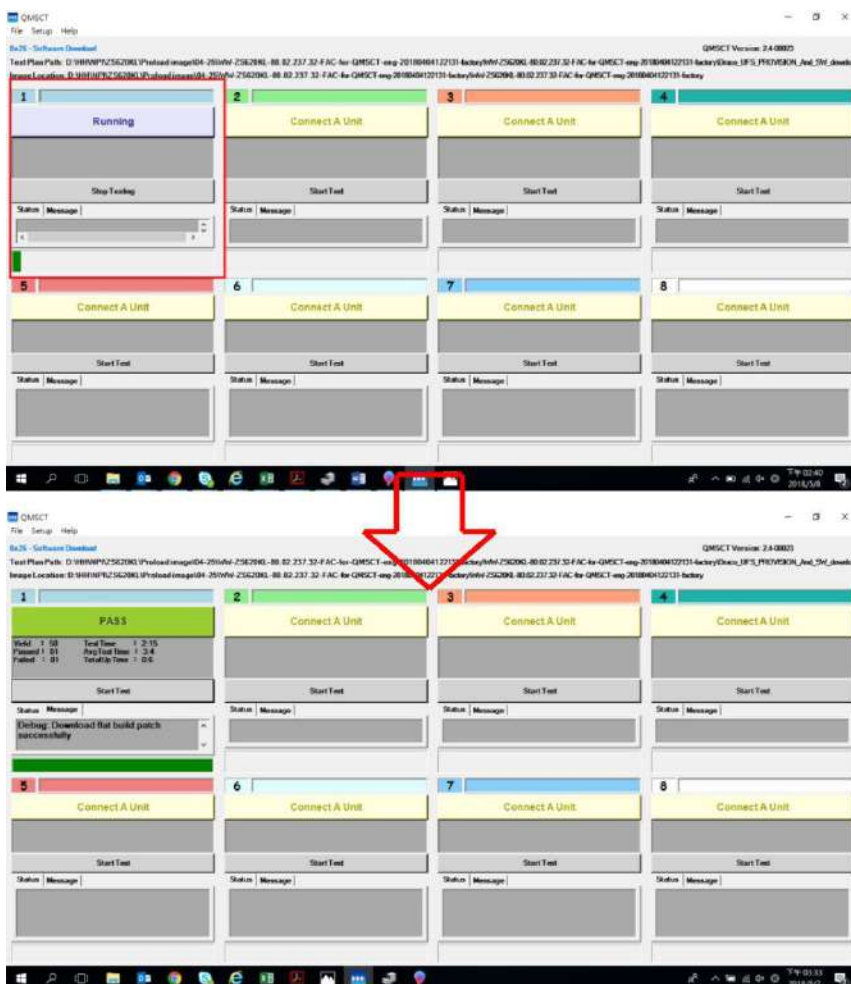
- The ports & status field will detect com port



6. Select "Product" then click "save"



7. Please re-plug the USB cable
8. The program will auto download image



9. Please remove USB cable and reboot the device Q&A  
Debug: Sahara Fail:QsaharaServer Fail:Process fail Please re-enter EDL mode