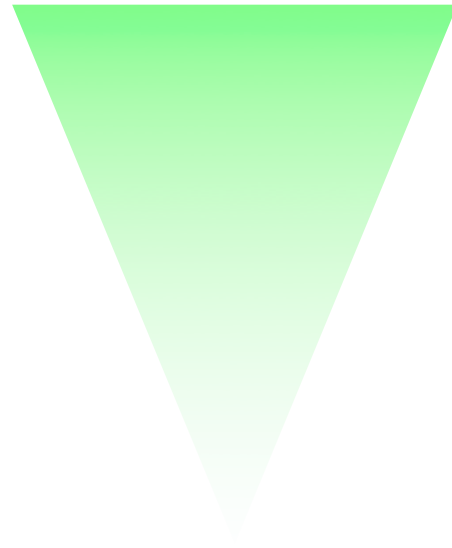


phenoDist



Cell-based High-throughput Screening

Intensity(reporter) based screen

Cell seeding

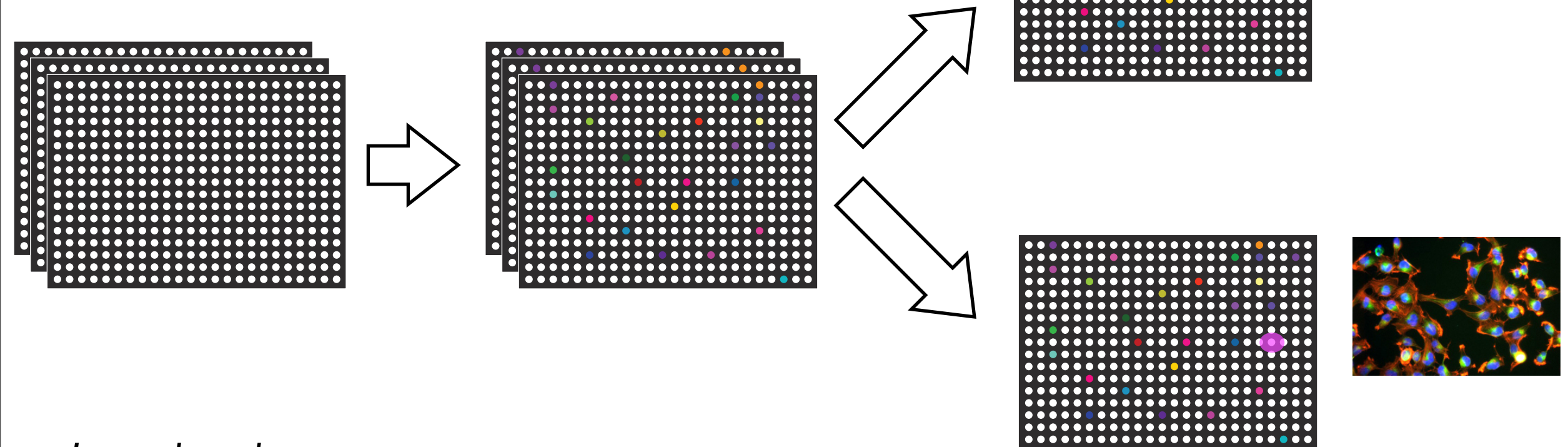
Mini. reaction

Plate reader (intensity readout)

120

Image based screen

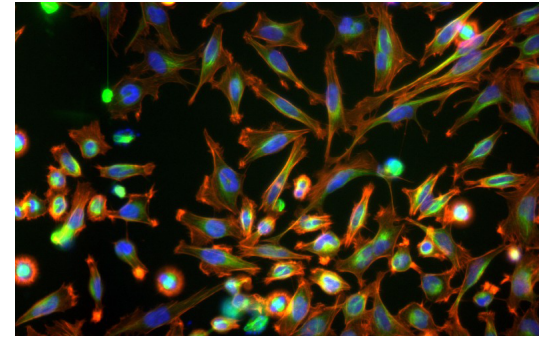
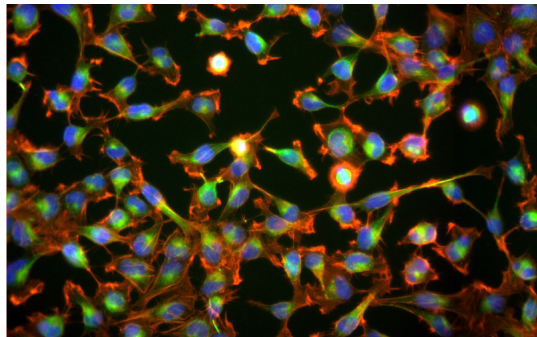
Microscope (image readout)



Hit Identification

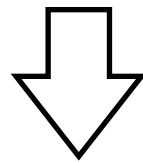
intensity screen Negative control Sample Difference
100 500 400

image screen



??

Image quantification

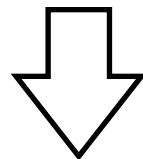


cell	features			
	size	shape	int.	...
1	50	0.3	650	...
2	64	0.8	800	...
...

cell	features			
	size	shape	int.	...
1	30	0.67	430	...
2	40	0.4	788	...
...

??

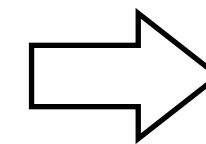
Dimension reduction



-	50	0.3	650	...
---	----	-----	-----	-----

-	30	0.25	1200	...
---	----	------	------	-----

Phenotypic distance



0.70

Distance
Calculation

Phenotypic Distance Methods

Computation steps

1. Feature selection

Tanaka 2005

Young 2008

Perlman 2004

Fuchs 2010

Loo 2007

2. Data Transformation

PCA

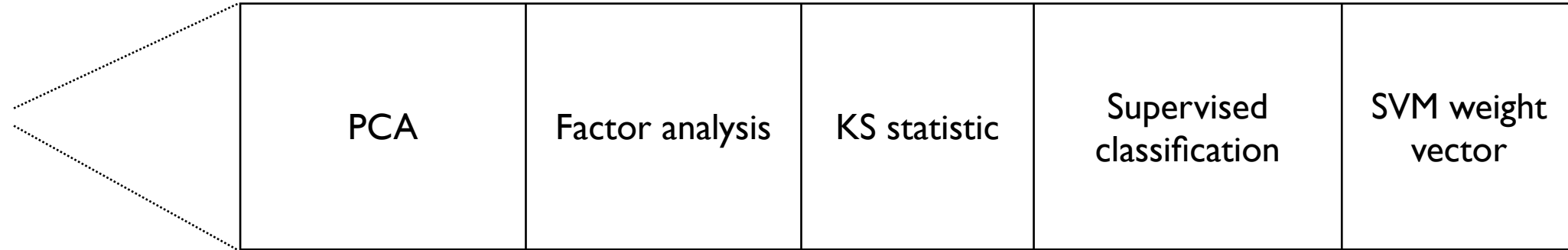
Factor analysis

KS statistic

Supervised
classification

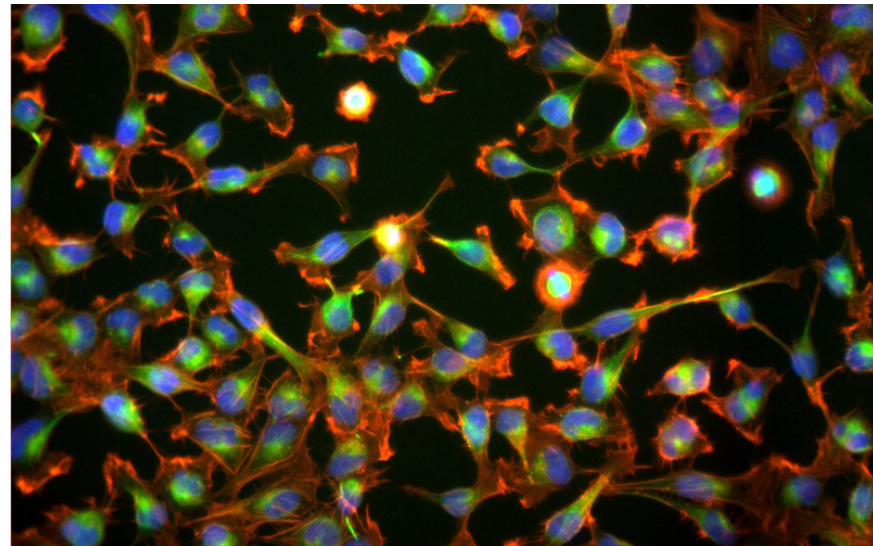
SVM weight
vector

3. Distance calculation

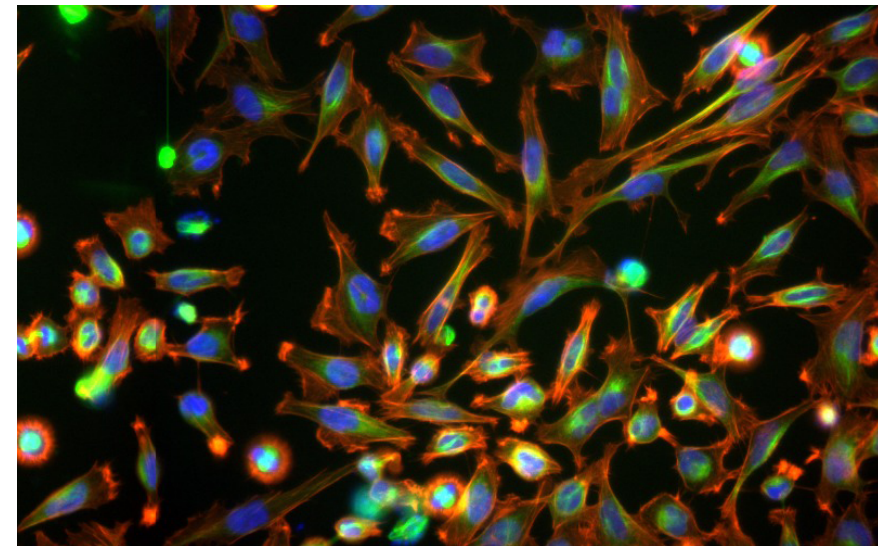


Phenotypic Distance via Classification

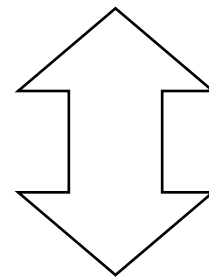
Negative control



Sample



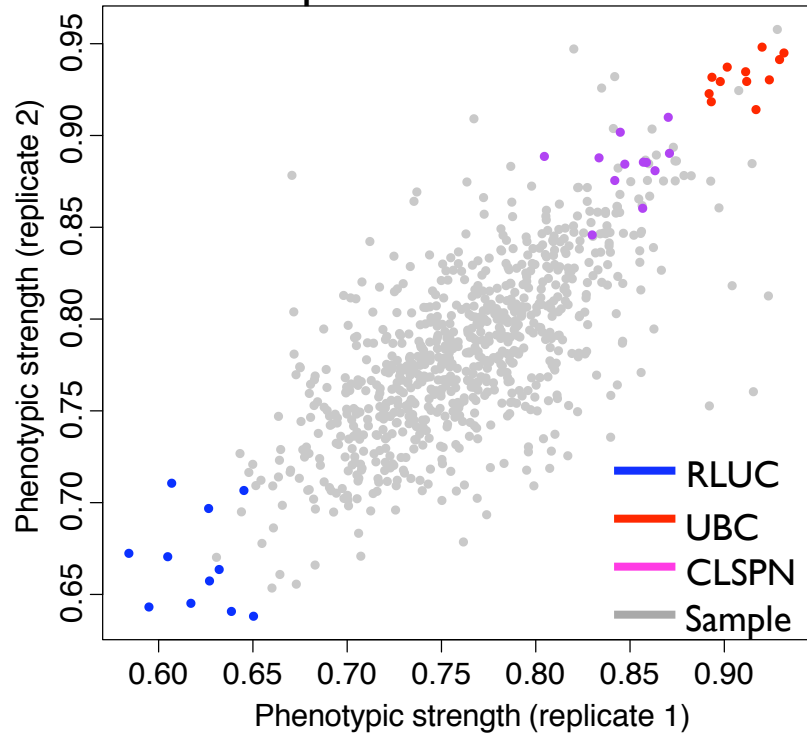
How similar/different are these two cell populations?



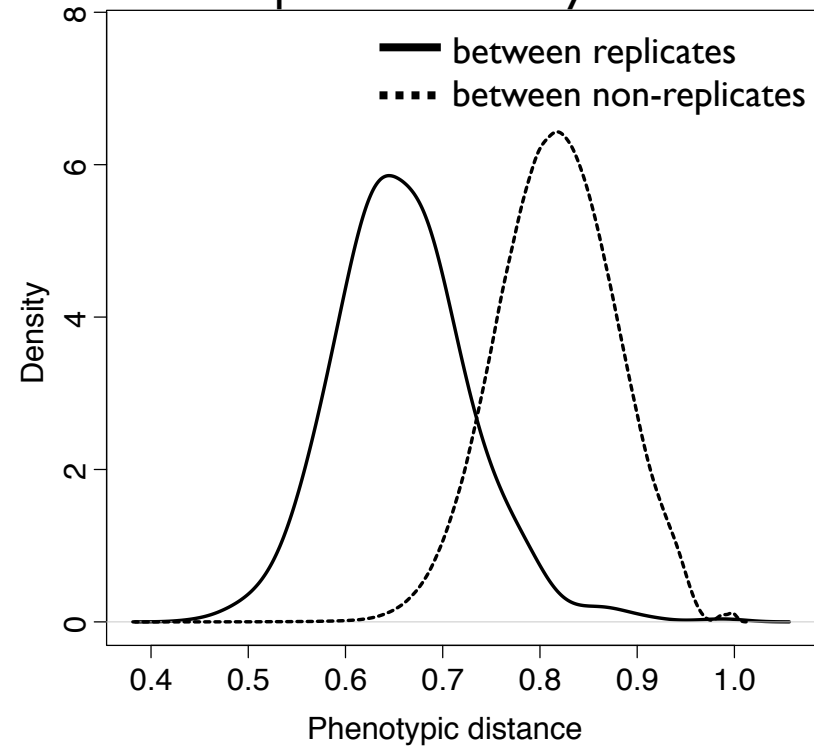
How easily can we separate the cell populations from each other, when they are mixed?

Quality Control

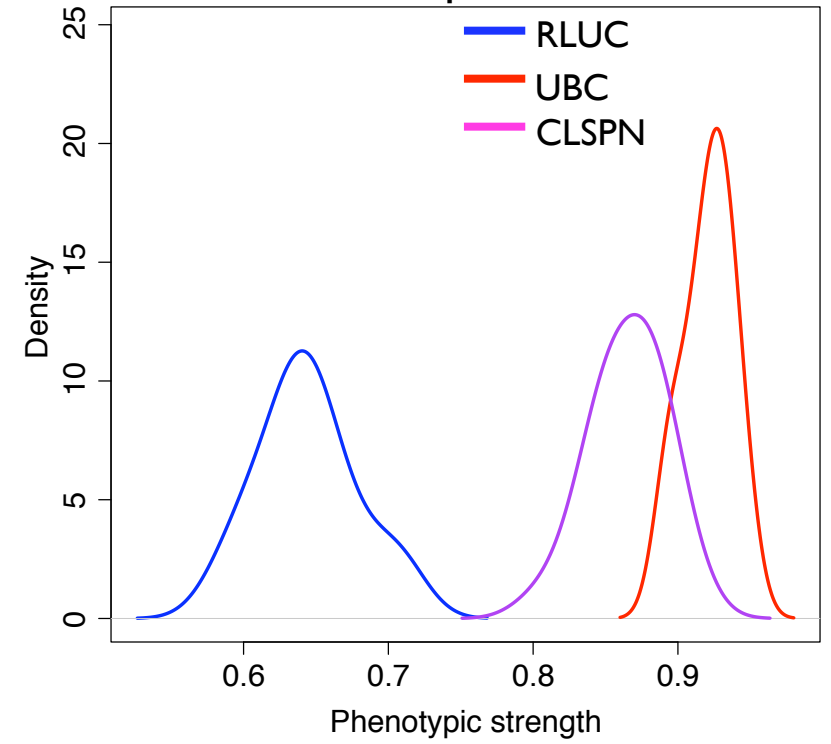
Replicate correlation



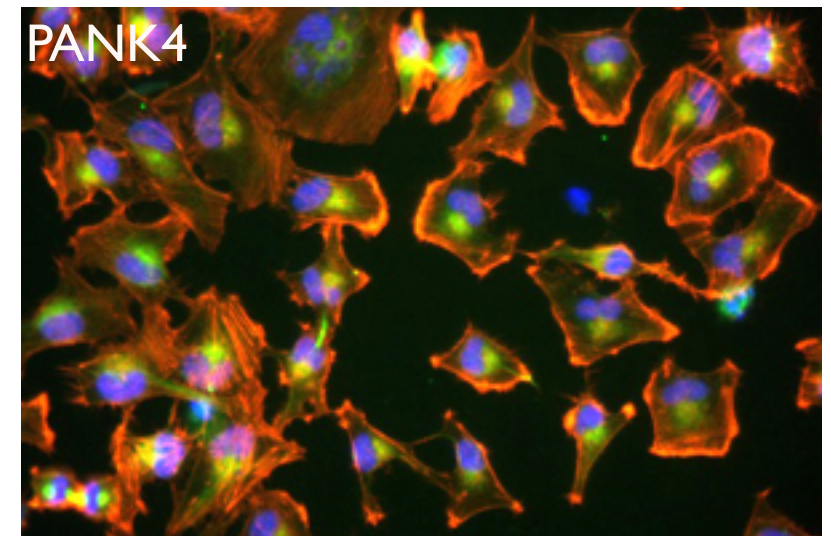
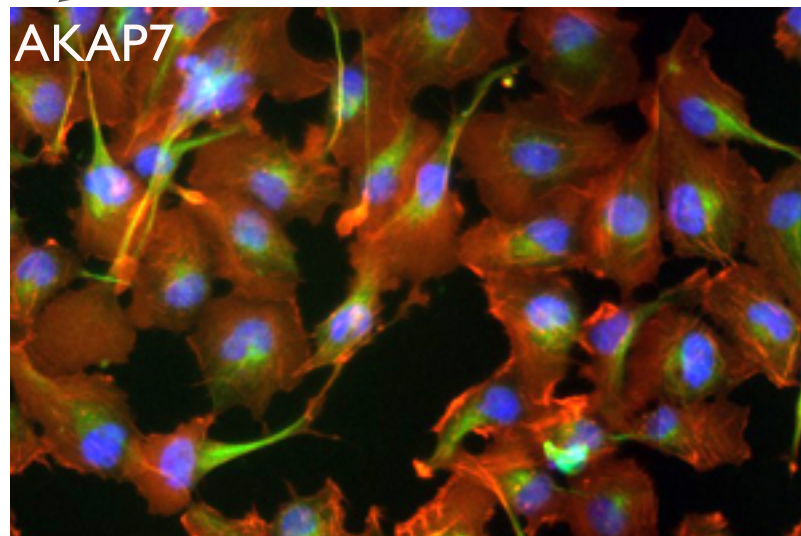
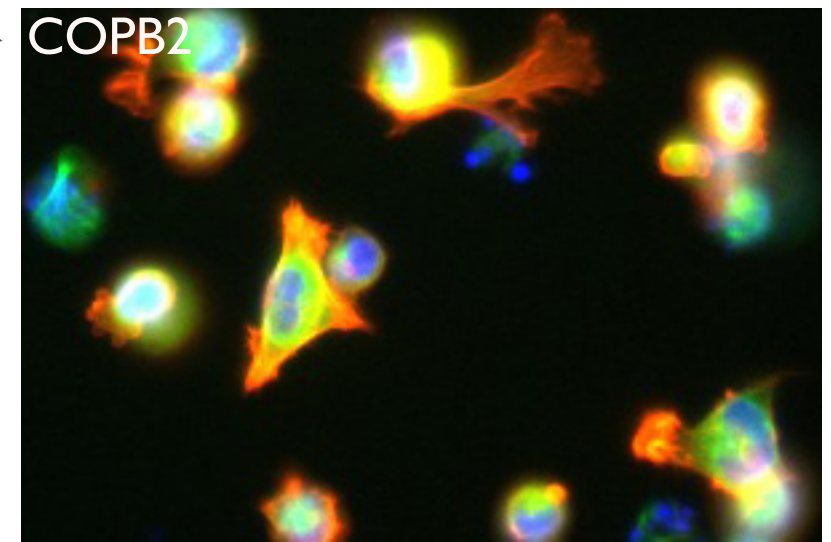
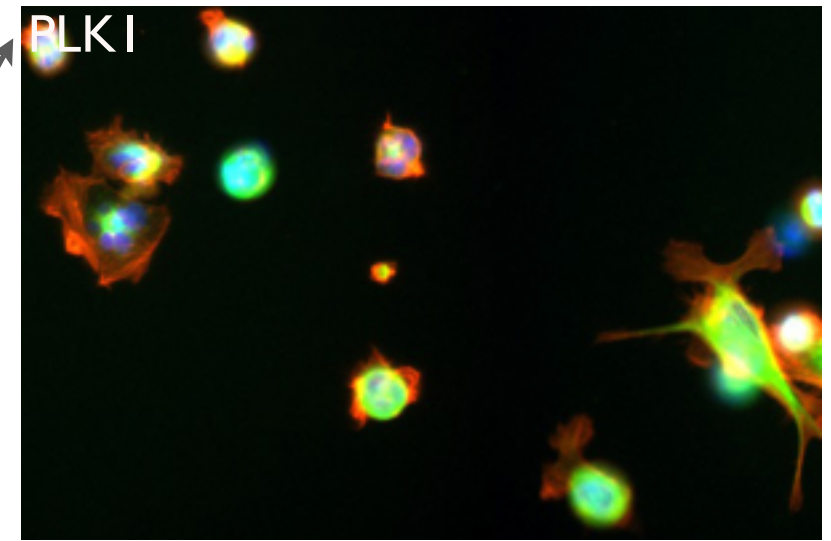
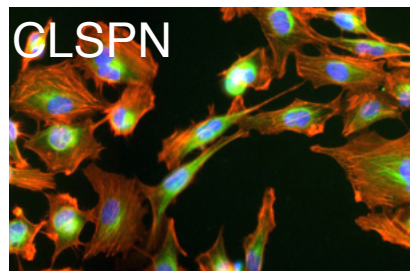
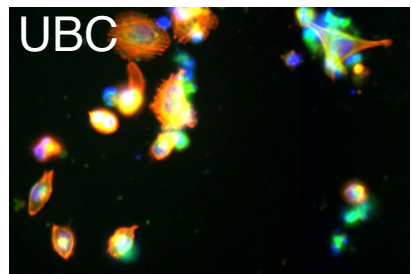
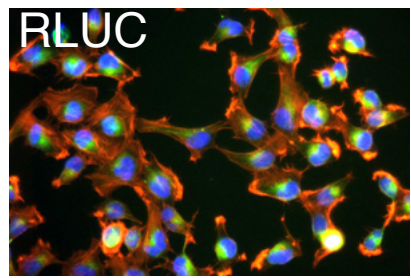
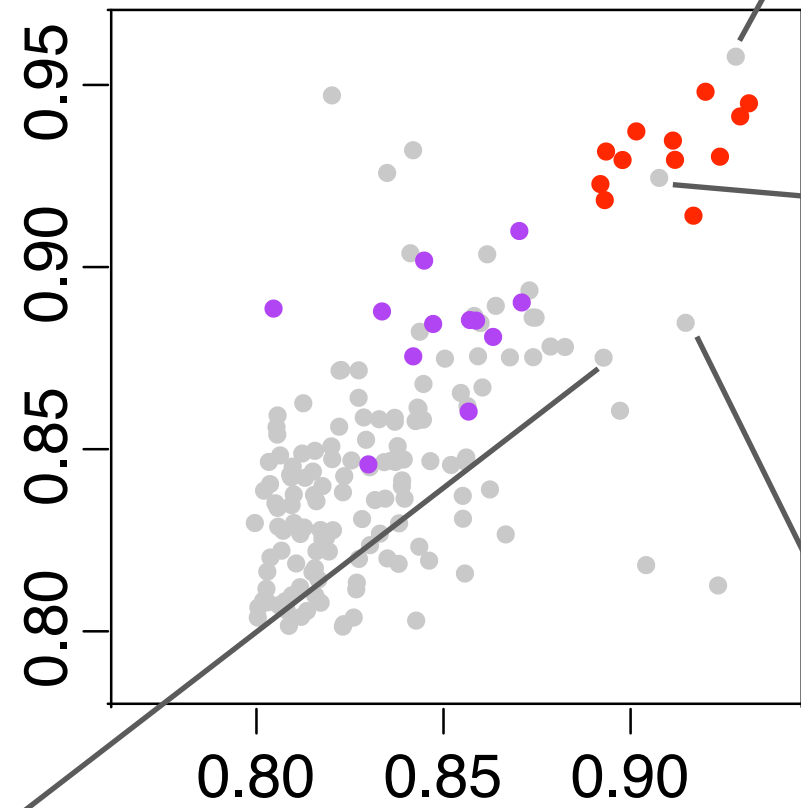
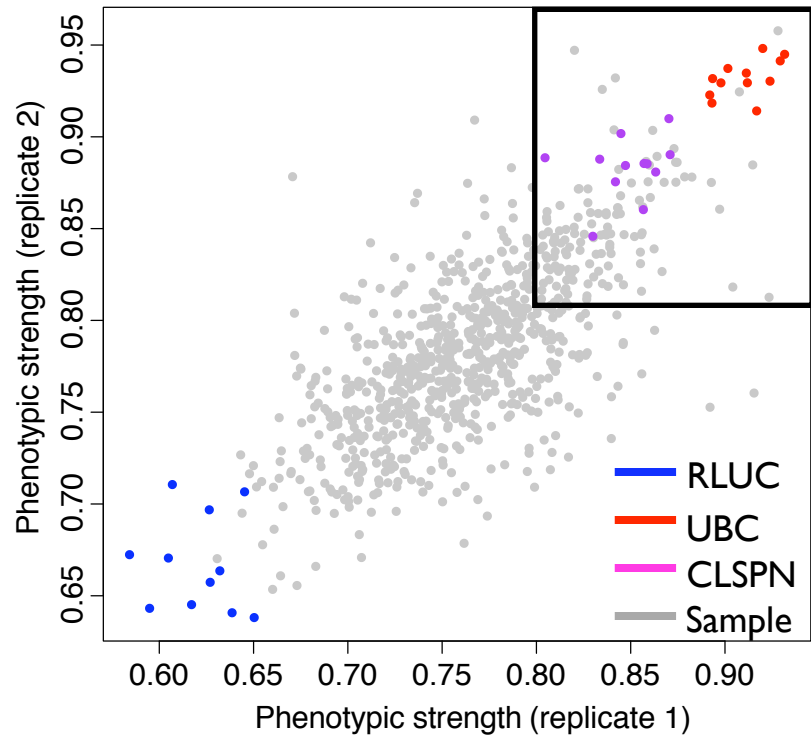
Replicate similarity



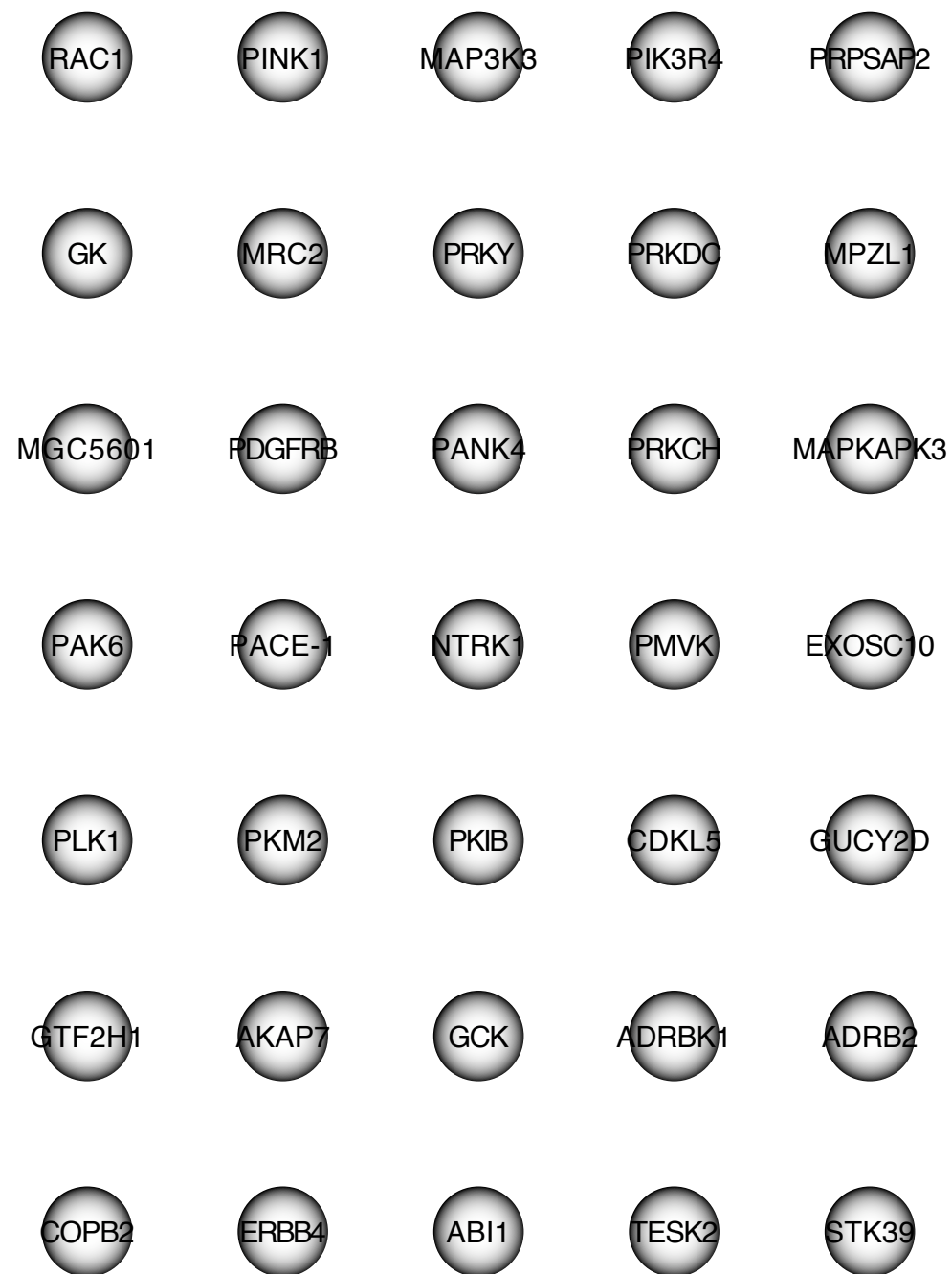
Control separation



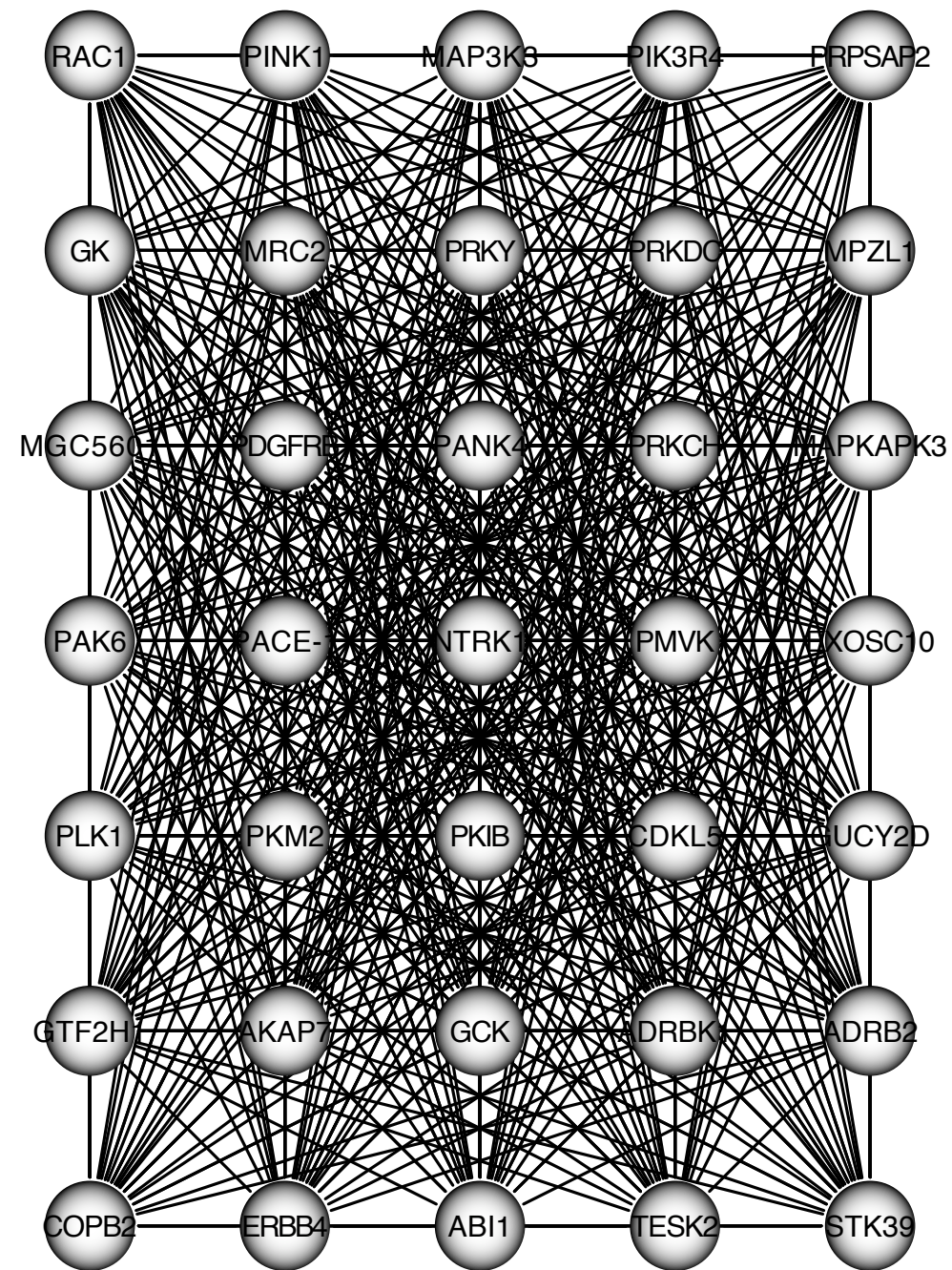
Hit Identification



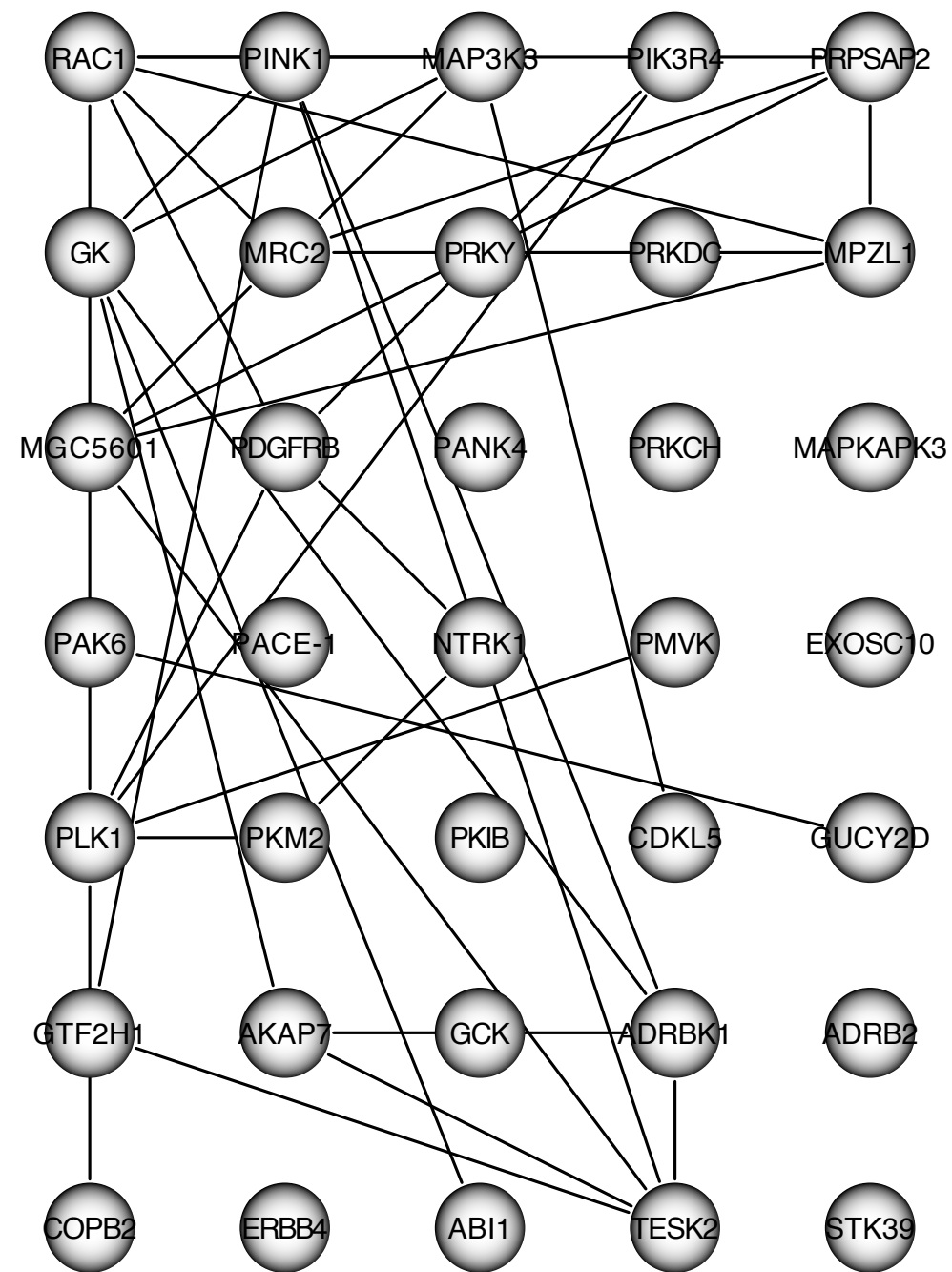
Hit Identification with Phenotypic Similarity



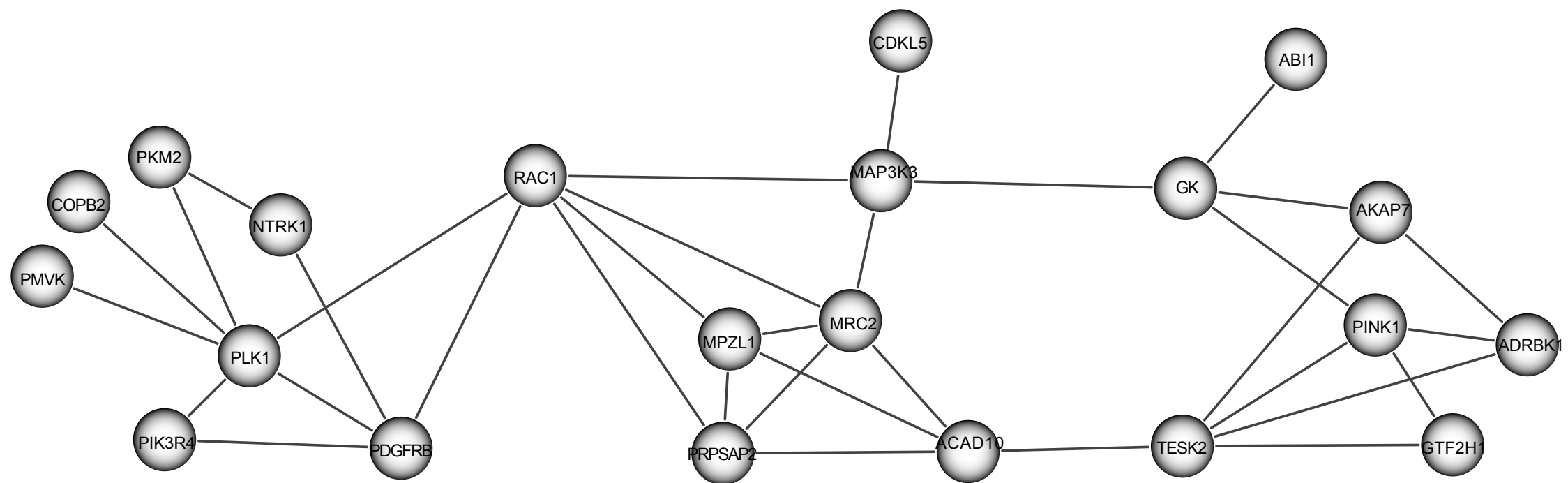
Hit Identification with Phenotypic Similarity



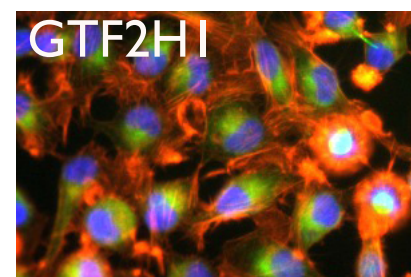
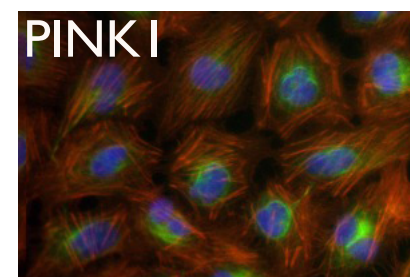
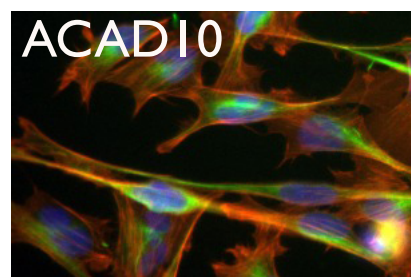
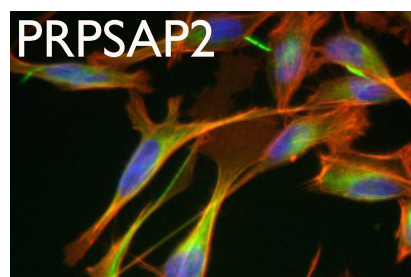
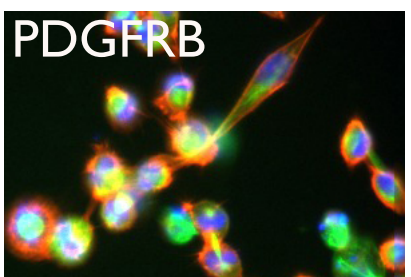
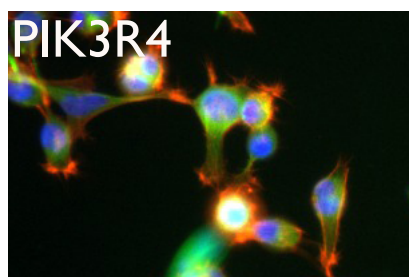
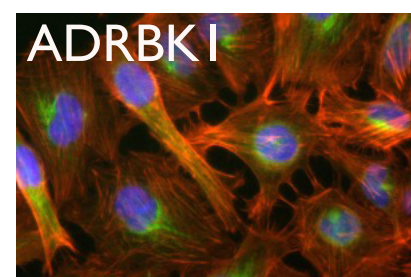
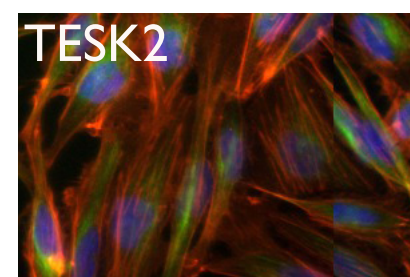
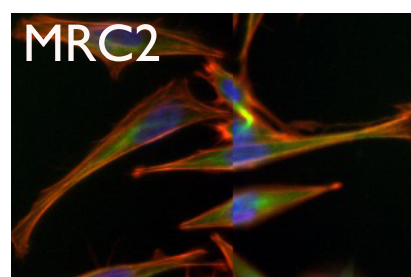
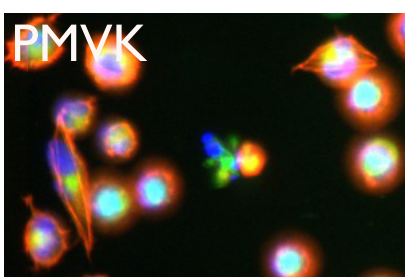
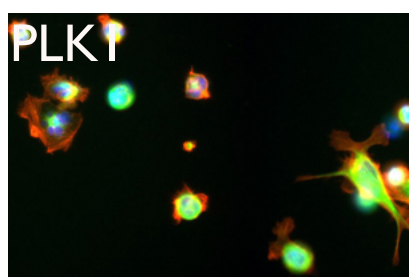
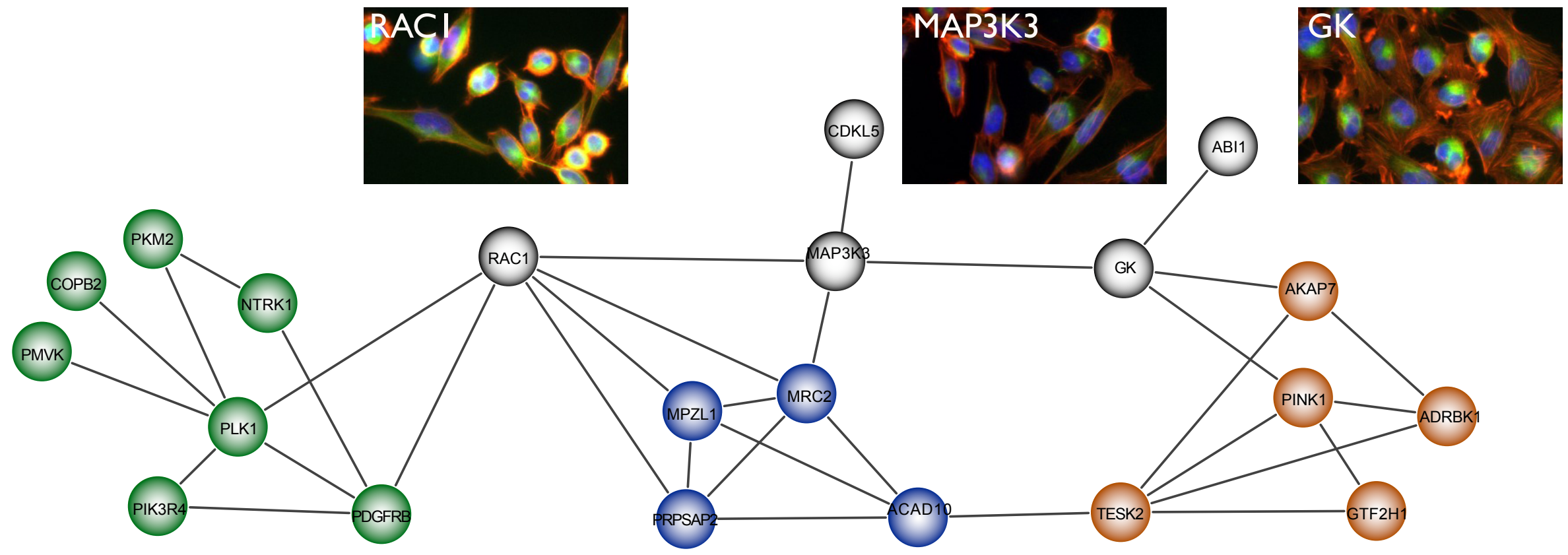
Hit Identification with Phenotypic Similarity



Hit Identification with Phenotypic Similarity

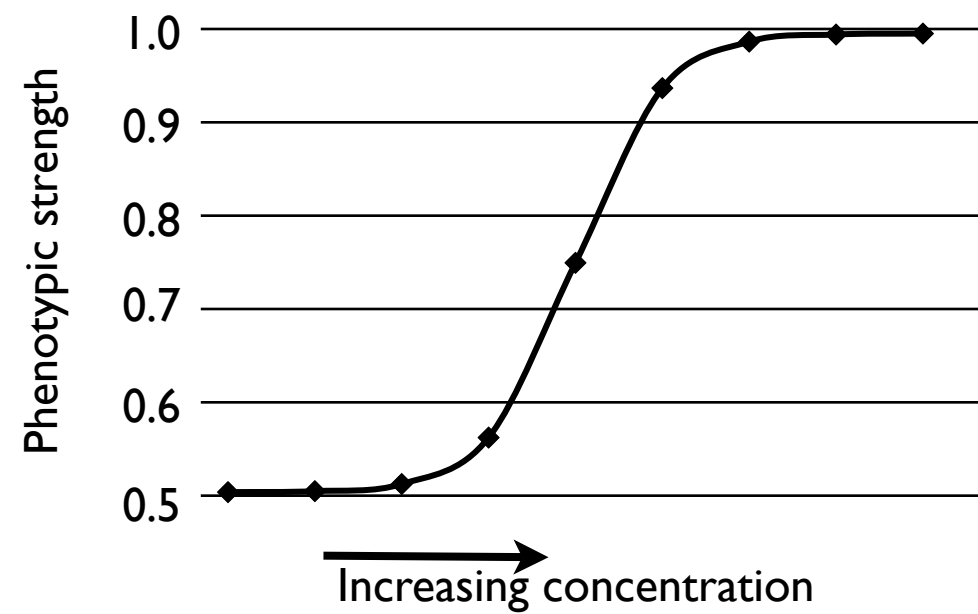


Hit Identification with Phenotypic Similarity



Future Development

Expand to compound screening analysis
e.g., dosage responsive curve, IC50 value



Developed by

Xian Zhang
Michael Boutros

Division Signaling and Functional Genomics
German Cancer Research Center



Greg Pau
Wolfgang Huber

Genome Biology Unit
EMBL

EMBL

